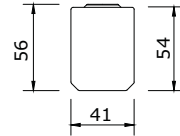
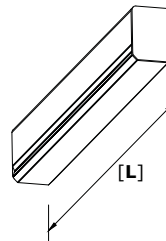


REK LED

SIMMETRICA/SYMMETRIC

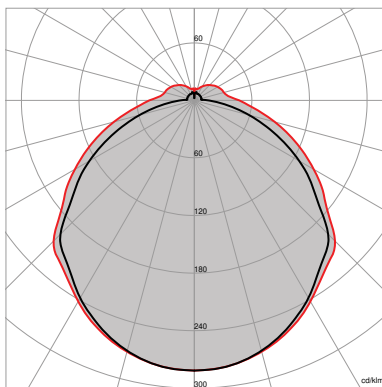
Reglette LED diffusione simmetrica. Corpo in lamiera verniciata, diffusore in metacrilato opale.
LED symmetric light batten. Painted sheet body, methacrylate opal diffuser.



Corpo in lamiera d'acciaio pressopiegata verniciata con polveri epossidiche previa fosfatazione.
Riflettore in alluminio speculare.
Diffusore in metacrilato opale.
Sistema di fissaggio a sospensione o a plafone.
Sorgente luminosa LED.
Emissione diretta.
Non idonea per l'applicazione esterna.
Alimentazione elettronica CAE.
A richiesta: dimmerabile DALI (cod. DL) specificare se con funzione PUSH DIM (cod. PD).

*Bent sheet steel body painted with epoxy powders after phosphating.
Aluminium specular reflector.
Opal methacrylate diffuser.
Suspension or ceiling fixing system.
LED light source.
Direct light emission.
Not suitable for outdoor application.
Built in electronic driver CAE.
On request: dimmable DALI (code DL) PUSH DIM function (code PD) to be requested.*

FOTOMETRIE | PHOTOMETRIES



REK LED
SIMMETRICA | SYMMETRIC



5Y WARRANTY
5% FAILURE RATE

60.000 h
LED LIFETIME L90B10

100.000 h
LED LIFETIME L70B50

Relamping	Lumen LED*	Watt LED**	Lumen Out***	Watt	Lumen Watt Out	L Lunghezza L Length	Configurazione LED LED configuration	Codice Code	K	Alimentazione Power Supply
1x14	1350	7,5	1080	8	> 135	570 mm	—	RK01	W: 3.000 N: 4.000	— : CAE A RICHIESTA ON REQUEST DL : DALI PD : PUSH DIM
2x14	2700	15	2160	16	> 135	570 mm	—	RK02		
1x28	3075	17	2460	18	> 137	1150 mm	—	RK03		
2x28	6120	34	4896	36	> 136	1150 mm	—	RK04		
1x35	4100	23	3280	24	> 137	1520 mm	—	RK05		
2x35	8000	46	6400	48	> 133	1520 mm	—	RK06		
1x80	5200	28,5	4160	30	> 139	1900 mm	—	RK10		
2x80	10000	57	8000	60	> 133	1900 mm	—	RK11		

		>80 CRI	IP40 EN 60529	230 V 2014/35/UE	50/60 Hz	IK 07 EN 60068
850° EN 60695		RG 0 EN 62471	01 WHITE			

TEMPERATURA AMBIENTE MIN E MAX | MIN AND MAX ROOM TEMPERATURE: **(-10° +40°)**

* Lumen nominali LED max a 25° | Nominal lumen at max 25°

** Potenza dei LED | LED power

*** Flusso totale in uscita dall'apparecchio a temperatura di lavoro (Ta 25° - 4.000 K) | Total lighting fitting flux output at working temperature (Ta 25° - 4.000 K) | (3.000 K - 8% - CRI 90 -10%)

★ Emergenza non disponibile per i seguenti codici: RK01-RK02
Emergency not available for the following codes: RK01-RK02

A RICHIESTA | ON REQUEST

>90 CRI	EM EN 60598-2-22	DL DALI	PD PUSH DIM
----------------------	----------------------------	-------------------	-----------------------